

Adroit 250E/G - 230E/G

Araç Üstü Püskürtme Beton Makinesi



230E/G and 250E/G series Adroits are mobile, on vehicle shotcrete machines, which can travel on highways. Compact concrete pumping unit, folding telescopic boom, additive and water pumps and tanks, cable reel, compressor and all other required accessories are assembled on the vehicle. According to demand of user, generator can be added on the vehicle. Adroit 250E/G offers shotcrete and concrete pumping features together by its special design concrete pumping unit. Standard pumping capacity is 30 m³/h and concrete pumping capacity is adjustable.

Adroit 230E/G has pumping capacity of 22 m³/h and contains all standard components. Truck mounted Adroits eliminate the transportation problem between the construction sites and able to work immediately after the arrival.

GENERAL SPECIFICATIONS

- > Valf Groups, electrical panel, motors and pumps are sheltered by compact modular system
- > Led control panel showing fault, warning info
- > Stabilizer cylinder and valve group
- > Cable remote control
- > Handheld fire extinguisher

DIMENSIONS AND WEIGHT

- > Length 7500 mm - 9500 mm
- > Width 2500 mm
- > Height 3500 mm - 3800 mm
- > Platform weight nearly 4800 kg without generator
- > Platform weight nearly 7100 kg with generator

CONCRETE PUMP

- > Theoretical max. capacity of pumping shotcrete :
30 m³/h for 250 series
22 m³/h for 230 series
- > Shotcrete flow control system
- > Pumping pressure
Max. 70 bar for 250 series
Max. 60 bar for 230 series
- > Hydraulic pressure : Max. 250 bar
- > Aggregate size : Max. 16 mm
- > Adroit shotcrete machines are able to pump all type of fibers
- > Diesel engine driven concrete unit cleaning system
- > Hydraulically driven hopper vibrator
- > Hydraulically controlled hopper drain cover
- > Concrete line diameter 76 mm

ACCELERATOR SYSTEM

- > Electrically driven accelerator peristaltic pump
- > Dosing rate : max. 0 to 20 L/min
- > Pumping pressure : max. 15 bar
- > Accelerator tank : 600 L or 1000 L
- > Dosing rate can be controlled manually, flow rate (L/min) and dosing percentage (%) readable on the display

BOOM SYSTEM

- > Lateral : 13.5 m
- > Vertical : 16 m
- > Lifting, tilting and telescopic boom system

COMPRESSOR

- > Electrically operated screw compressor
- > Capacity : 9.2 m³/min.
- > Pressure : 8 bar
- > Electric motor : 55 kW

DIESEL GENERATOR

- > Stand by power : 220 kVA
- > Voltage : 400 V

HYDRAULIC SYSTEM

- > Tank capacity 250 L
- > Hydraulic filtration, fluid temperature and tank fluid level sensing and warning system

HIGH PRESSURE WATER WASHER

- > Water pump 14 L/min.
- > Max. water pressure 200 bar
- > Hose length 10 m
- > Tank capacity 300 L

24VDC ELECTRICAL SYSTEM

- > Electrical components : IP65 and above protection grade
- > Led flashing beacon in amber colour

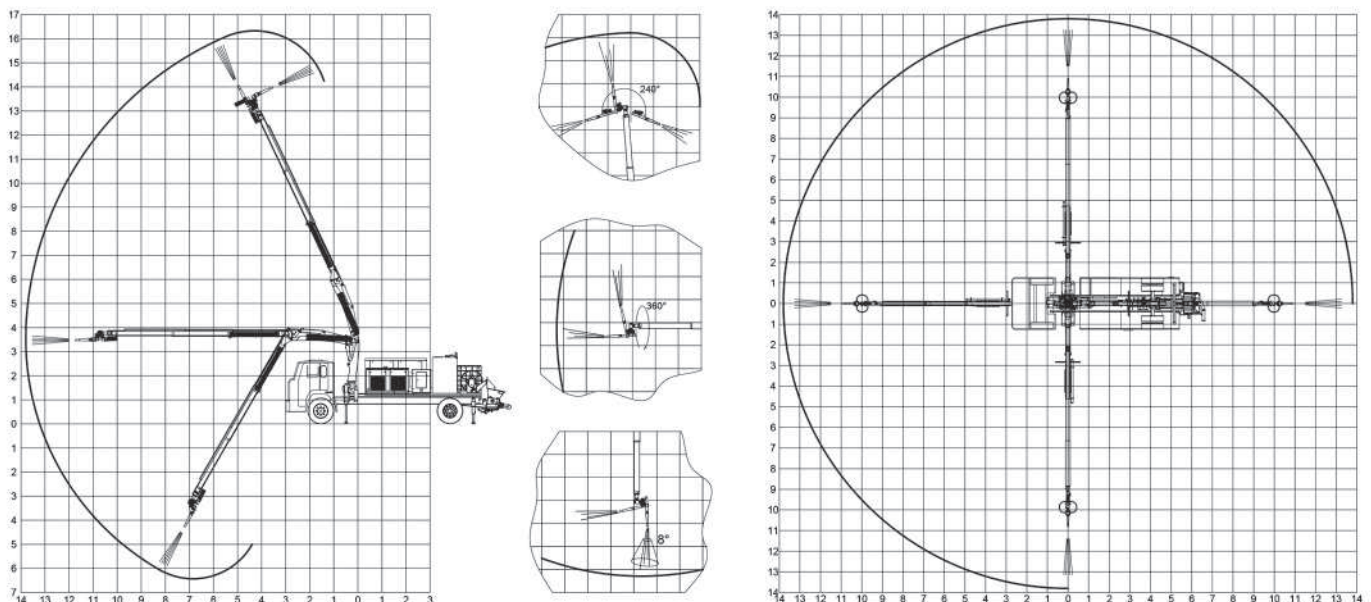
HIGH VOLTAGE ELECTRICAL SYSTEM

- > 380 V, 50 Hz. cable type 3 x 50 mm² + 25 mm²
- > Power pack 45 kW electrical motor
- > Hydraulically driven cable reel
- > Cable length 50 m

OPTIONAL COMPONENTS

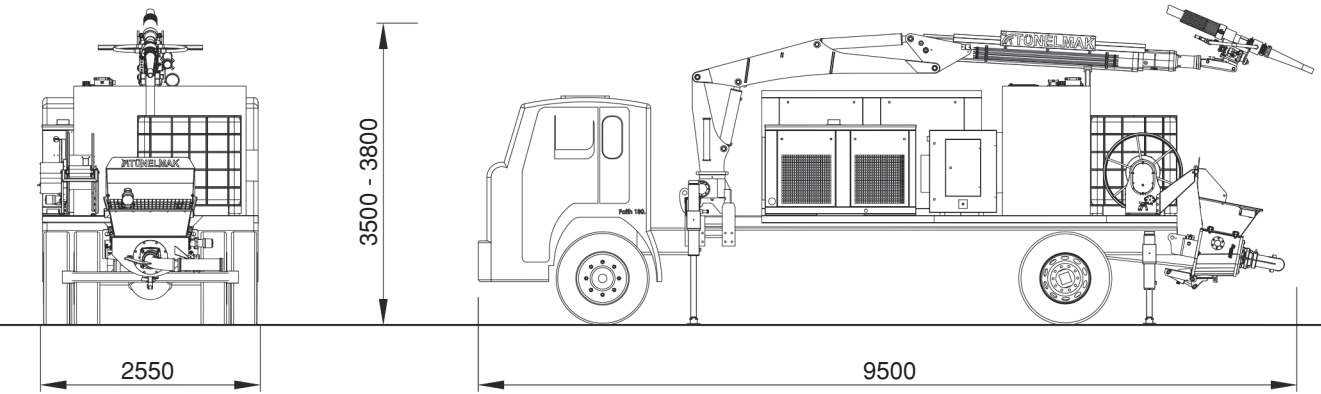
- > Electrically driven hopper vibrator
- > Form oil system
- > Water reel
- > Radio remote control
- > Automatic lubrication system

Operation Diagram

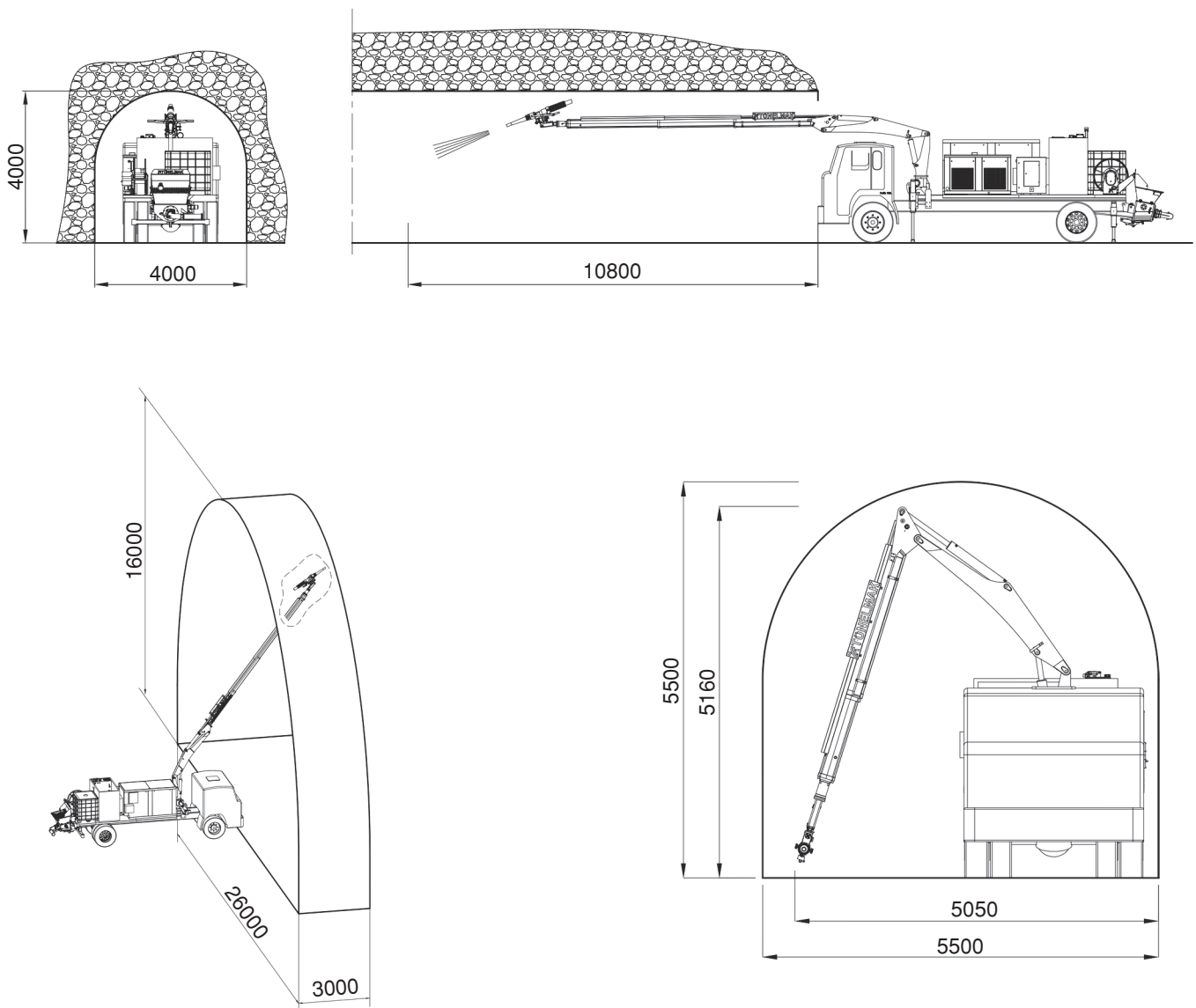


Adroit 250E/G - 230E/G Truck Mounted Shotcrete Machines
Dimensions of Vehicle

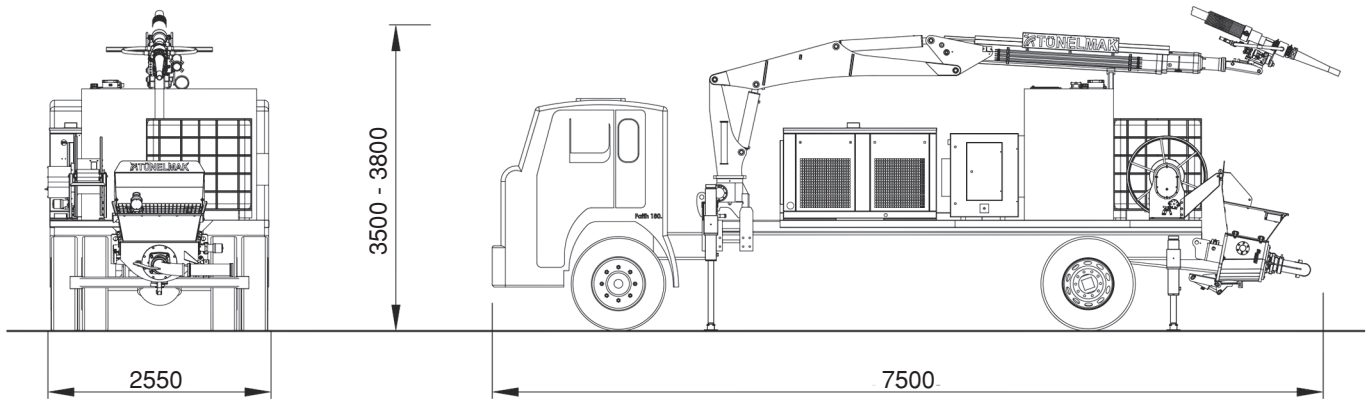
Adroit 230-250G



Spraying Dimensions



Adroit 230-250E



Spraying Dimensions

